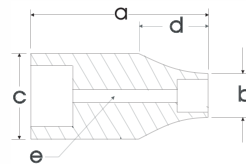


# 1" DRIVE SOCKETS & ATTACHMENTS

## 12 Point Standard Length

Hex Size	12 Point Part No.	Overall Length in. a	Drive End in. b	Hex End in. c	Taper Length in. d	Bolt Clearance in. e
17/16"	X46	2.50	1.75	2.00	1.00	thru
1 1/2"	X48	2.56	1.75	2.12	1.00	thru
1 5/8"	X52	2.68	1.75	2.25	1.87	thru
1 11/16"	X54	2.75	1.93	2.37	1.87	thru
1 3/4"	X56	2.81	1.93	2.50	1.87	thru
1 13/16"	X58	2.93	1.93	2.56	1.87	thru
1 7/8"	X60	3.00	2.25	2.62	.87	thru
2"	X64	3.00	2.25	2.75	.93	thru
2 1/16"	X66	3.00	2.25	2.84	1.00	thru
2 1/8"	X68	3.00	2.25	2.93	1.12	thru
2 3/16"	X70	3.12	2.25	3.00	1.00	thru
2 1/4"	X72	3.18	2.25	3.12	1.00	thru
2 5/16"	X74	3.25	2.25	3.18	1.50	thru
2 3/8"	X76	3.31	2.25	3.25	1.12	thru
2 7/16"	X78	3.37	2.25	3.31	1.18	thru
2 1/2"	X80	3.50	2.25	3.37	1.25	thru
2 9/16"	X82	3.50	2.25	3.37	1.25	thru
2 5/8"	X84	3.50	2.25	3.50	1.25	thru
2 3/4"	X88	3.68	2.68	3.68	1.25	thru
2 15/16"	X94	3.87	2.68	3.93	1.37	thru
3"	X96	4.00	2.68	4.00	1.37	thru
3 1/8"	X100	4.00	2.68	4.18	1.37	thru

Federal Spec. CDA 39-GP-12b U.S. GGG-W 641E ANSI Spec. B107.10M



## 12 Point Standard Length

Hex Size	12 Point Part No.	Overall Length mm a	Drive End mm b	Hex End mm c	Taper Length mm d	Bolt Clearance mm e
46mm	MX46	75	49	65	30	thru
50mm	MX50	76	57	70	24	thru
54mm	MX54	76	57	75	29	thru
55mm	MX55	79	57	76	25	thru
60mm	MX60	84	57	83	29	thru
65mm	MX65	89	57	86	32	thru
70mm	MX70	94	68	94	32	thru
75mm	MX75	102	68	102	35	thru

Federal Spec. CDA 39-GP-12b U.S. GGG-W 641E.

Note: NOT FOR IMPACT USE. All items on this page are for hand use only.